

# KHSAA Basketball - Game Box Score

## Marshall County Lady Marshals vs. Henderson County Lady Colonels

**Date: 03/12/09 Time: 8:40 pm EST Site: Diddle Arena-Bowling Green, KY Attendance: 4659**

### Visitors: Henderson County Lady Colonels

##	Name	P	FG	3 Pt	FT	PTS	ORB	DRB	TR	PF	AST	TO	BS	ST	MIN
10	* Ariel Barnes		2/3	0/2	3/5	7	0	2	2	4	1	2	0	4	31:35
12	Kayla Jennings		0/0	0/0	0/0	0	0	0	0	0	0	0	0	0	DNP
14	Ellie Fruit		0/0	0/0	0/0	0	0	0	0	0	0	0	0	0	DNP
15	* Krista Norman		0/5	0/2	1/3	1	0	3	3	3	6	0	0	1	32:00
20	Lauren Rodgers		1/1	0/0	0/0	2	0	0	0	0	0	0	0	0	2:51
22	* Olivia Fruit		1/5	2/3	6/6	14	4	3	7	2	2	2	1	0	29:29
23	Alexia Langley		0/0	0/0	0/0	0	0	0	0	0	0	0	0	0	0:25
24	Sara Garrett		1/4	0/1	0/0	2	1	0	1	0	1	0	0	0	5:20
30	Kristen Oliver		0/0	0/0	0/0	0	0	0	0	0	0	0	0	0	DNP
32	* Danielle Dixon		7/13	0/0	0/2	14	6	2	8	3	4	0	2	1	32:00
33	Chelsea Stone		0/0	0/0	0/0	0	0	0	0	0	0	0	0	0	DNP
44	Breasha Bostic		0/0	0/0	0/0	0	0	0	0	0	0	0	0	0	DNP
54	* Alyse Poindexter		5/9	0/0	3/4	13	1	6	7	4	1	2	7	0	26:20
21	Tyeesha Petrie		0/0	0/0	0/0	0	0	0	0	0	0	0	0	0	DNP
	Team						1	3	4						
	<b>Totals</b>		<b>17/40</b>	<b>2/8</b>	<b>13/20</b>	<b>53</b>	<b>13</b>	<b>19</b>	<b>32</b>	<b>16</b>	<b>15</b>	<b>6</b>	<b>10</b>	<b>6</b>	<b>160</b>
	<b>2 PT FG</b>		1st Half	10/24	41.7%	2nd Half	7/16	43.8%	Game	17/40	42.5%				
	<b>3 PT FG</b>		1st Half	1/5	20.0%	2nd Half	1/3	33.3%	Game	2/8	25.0%				
	<b>Free Throws</b>		1st Half	5/6	83.3%	2nd Half	8/14	57.1%	Game	13/20	65.0%				

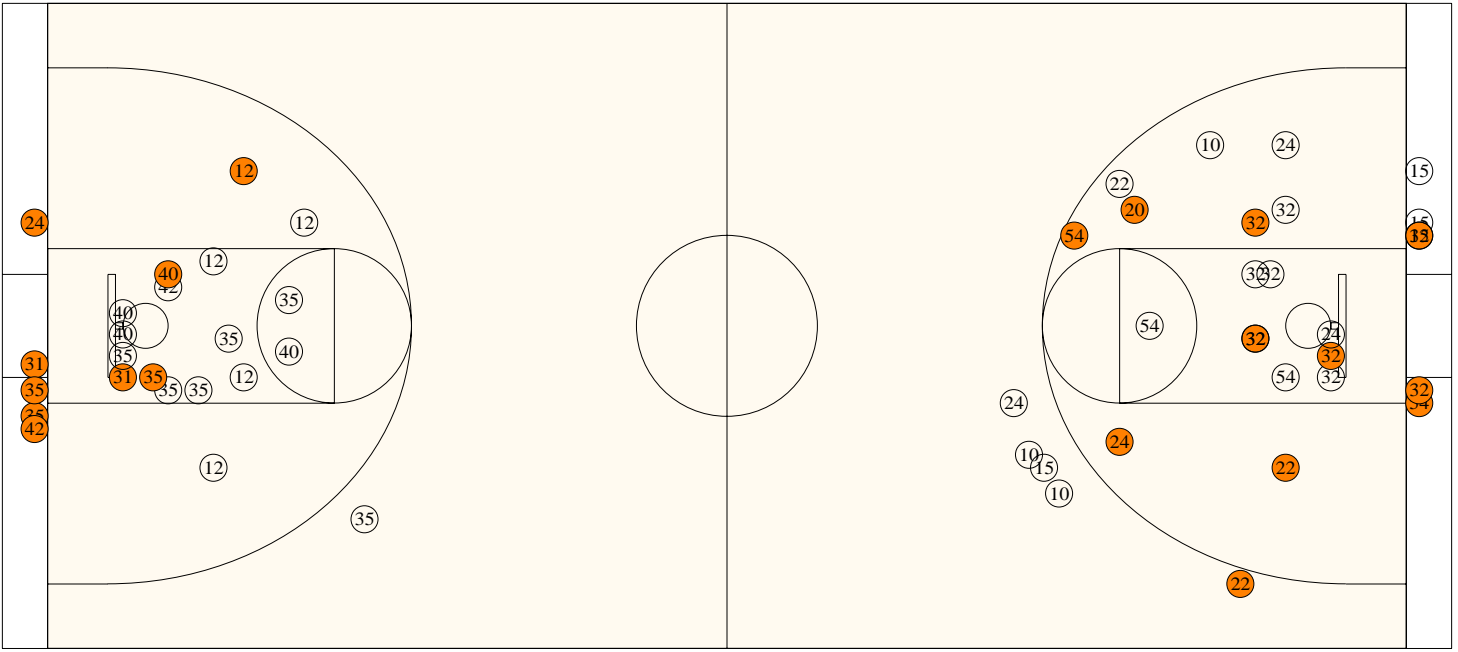
### Home: Marshall County Lady Marshals

##	Name	P	FG	3 Pt	FT	PTS	ORB	DRB	TR	PF	AST	TO	BS	ST	MIN
10	Tory Fehrenbacher		0/0	0/0	0/0	0	0	0	0	0	0	0	0	0	1:12
12	* Jordan Gilland		3/10	0/2	2/2	8	3	3	6	5	2	2	1	0	31:13
21	Michaela Hunt		0/0	0/1	0/0	0	0	0	0	1	0	0	0	0	0:22
23	Taylor Clark		0/0	0/0	0/0	0	0	0	0	0	0	0	0	0	0:15
24	* Margaret Thomas		3/7	0/1	3/5	9	0	3	3	4	2	5	0	1	31:45
30	Melanie McKendree		0/0	0/0	0/0	0	0	0	0	0	0	0	0	0	DNP
31	* Hannah Ellis		3/4	0/0	0/1	6	3	6	9	4	0	3	0	0	30:45
34	Kelsey Lawson		0/0	0/0	0/0	0	0	0	0	0	0	1	0	0	3:34
35	* Jessica Holder		5/16	0/2	6/7	16	7	5	12	2	0	1	3	0	31:45
40	Lena Bohannon		1/5	0/0	0/0	2	2	1	3	1	0	2	0	0	14:41
42	* Kaylin Goins		1/3	0/0	0/0	2	1	0	1	0	0	1	1	0	14:28
	Team						2	1	3						
	<b>Totals</b>		<b>16/45</b>	<b>0/6</b>	<b>11/15</b>	<b>43</b>	<b>18</b>	<b>19</b>	<b>37</b>	<b>17</b>	<b>4</b>	<b>15</b>	<b>5</b>	<b>1</b>	<b>160</b>
	<b>2 PT FG</b>		1st Half	9/22	40.9%	2nd Half	7/23	30.4%	Game	16/45	35.6%				
	<b>3 PT FG</b>		1st Half	0/1	0.00%	2nd Half	0/5	0.00%	Game	0/6	0.00%				
	<b>Free Throws</b>		1st Half	5/6	83.3%	2nd Half	6/9	66.7%	Game	11/15	73.3%				
	Free Throw Pts		<b>Hen</b>	<b>Mar</b>	3Pt Points	<b>Hen</b>	<b>Mar</b>	Pts/Possession	<b>Hen</b>	<b>Mar</b>		<b>Hen</b>	<b>Mar</b>		
	Pts off Turnovers		13	11	2nd Chance Points	6	0	Pts off Bench	1.02	0.78		4	2		
	Total Rebounds		15	4	Team Rebounds	12	7	Dead Ball Reb	4	2		2	4		
	Off Rebound %		32	37	Def Rebound %	4	3	Total Rebound %	46.4	53.6		46.4	53.6		
	3Pt Efficiency		40.6	48.6	Def. Stops	51.4	59.4	Pts/Shot	0.91	0.74		0.91	0.74		
	3Pt Efficiency		-3.3	-23.7		34	25								
	Technical Fouls		<b>Hen</b>	<b>Mar</b>	A Poindexter										
	Officials		<b>Mar</b>	<b>None</b>											
			John Boylan, Jr., Mike Melton, Jamie Gatewood												

	Qtr 1	Qtr 2	Qtr 3	Qtr 4	OT 1	OT 2	OT 3	OT 4	Total
<b>Henderson County Lady Colonels</b>	16	12	10	15	0	0	0	0	<b>53</b>
<b>Marshall County Lady Marshals</b>	12	11	9	11	0	0	0	0	<b>43</b>

**Largest Lead** Mar 41 Hen 51 (10 pts) **Lead Changes** 3 **Number of Ties** 0  
**Comments:** None

**FIRST HALF**



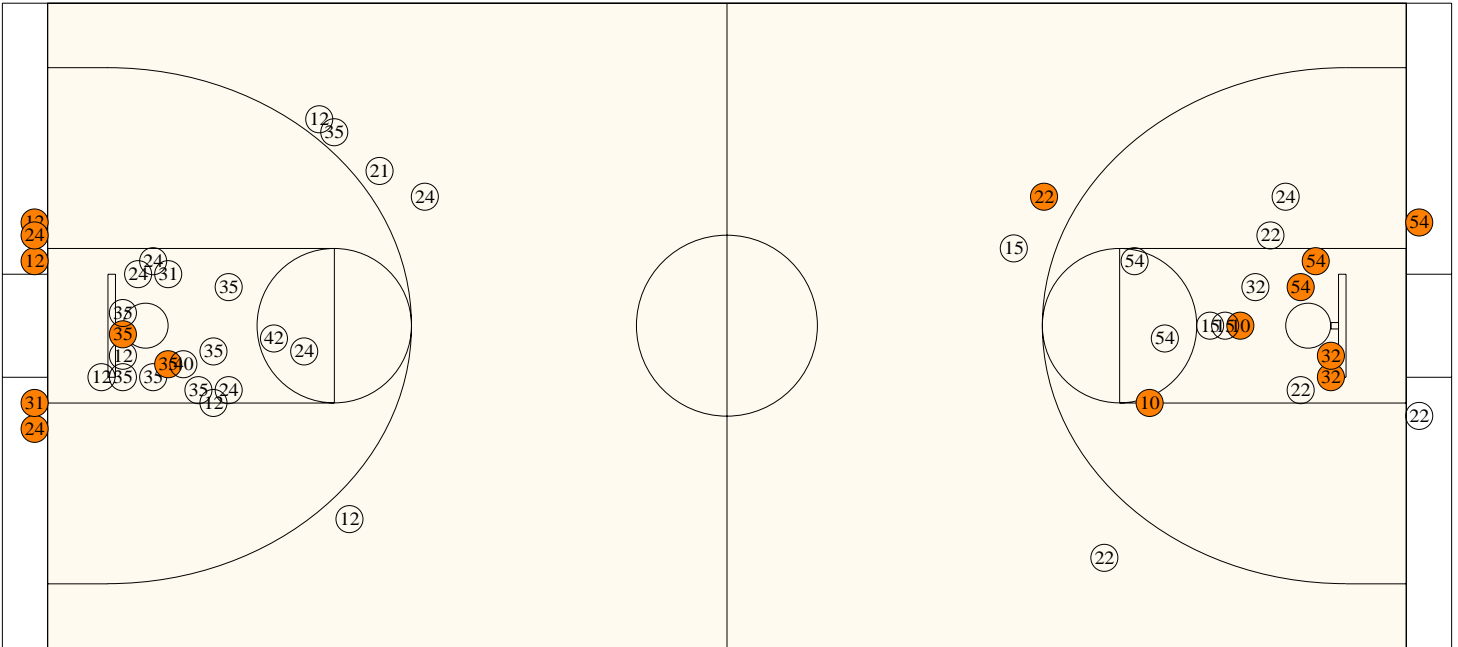
**Marshall County**

Shooting	Pts	Pts
2FG 9/22 (40.9%)	18	Pts/Shot 0.88
3FG 0/1 (0.00%)	0	2nd Eff Pts 4
TFG 9/23 (39.1%)		Pts off TO's 4
FT 5/6 (83.3%)	5	3Pt Eff -27.3
Scoring Distribution: 2FG 78.3% 3FG 0.0% FT 21.7%		

**Henderson County**

Shooting	Pts	Pts
2FG 10/24 (41.7%)	20	Pts/Shot 0.88
3FG 1/5 (20.0%)	3	2nd Eff Pts 4
TFG 11/29 (37.9%)		Pts off TO's 8
FT 5/6 (83.3%)	5	3Pt Eff -7.8
Scoring Distribution: 2FG 71.4% 3FG 10.7% FT 17.9%		

**SECOND HALF**



**Marshall County**

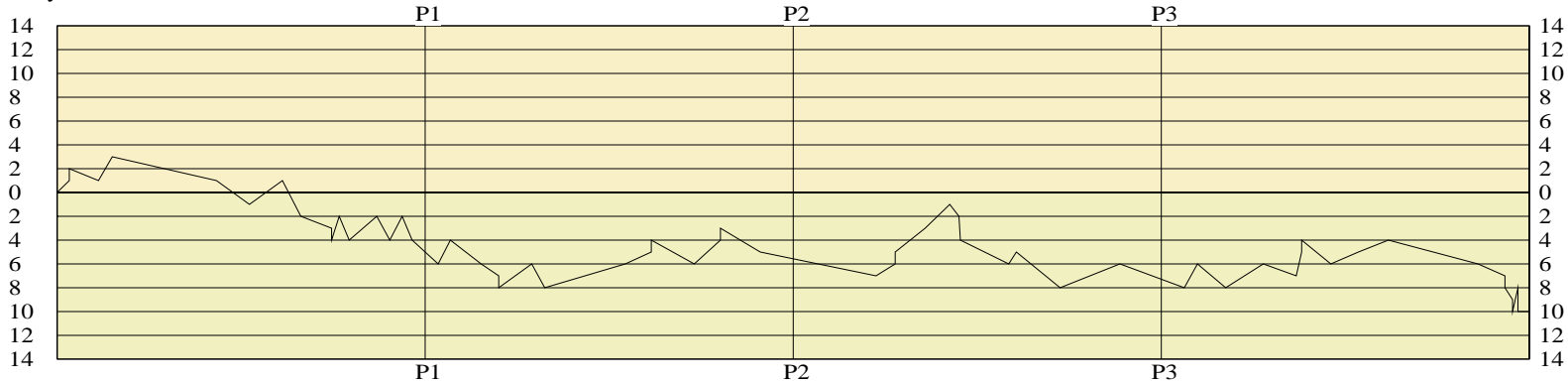
2FG 7/23 (30.4%)	14s	Pts/Shot 0.63
3FG 0/5 (0.00%)	0	2nd Eff Pts 3
TFG 7/28 (25.0%)		Pts off TO's 0
FT 6/9 (66.7%)	6	3Pt Eff -20.3
Scoring Distribution: 2FG 70.0% 3FG 0.0% FT 30.0%		

**Henderson County**

2FG 7/16 (43.8%)	14s	Pts/Shot 0.96
3FG 1/3 (33.3%)	3	2nd Eff Pts 8
TFG 8/19 (42.1%)		Pts off TO's 7
FT 8/14 (57.1%)	8	3Pt Eff +4.2
Scoring Distribution: 2FG 56.0% 3FG 12.0% FT 32.0%		

Lady Marshals

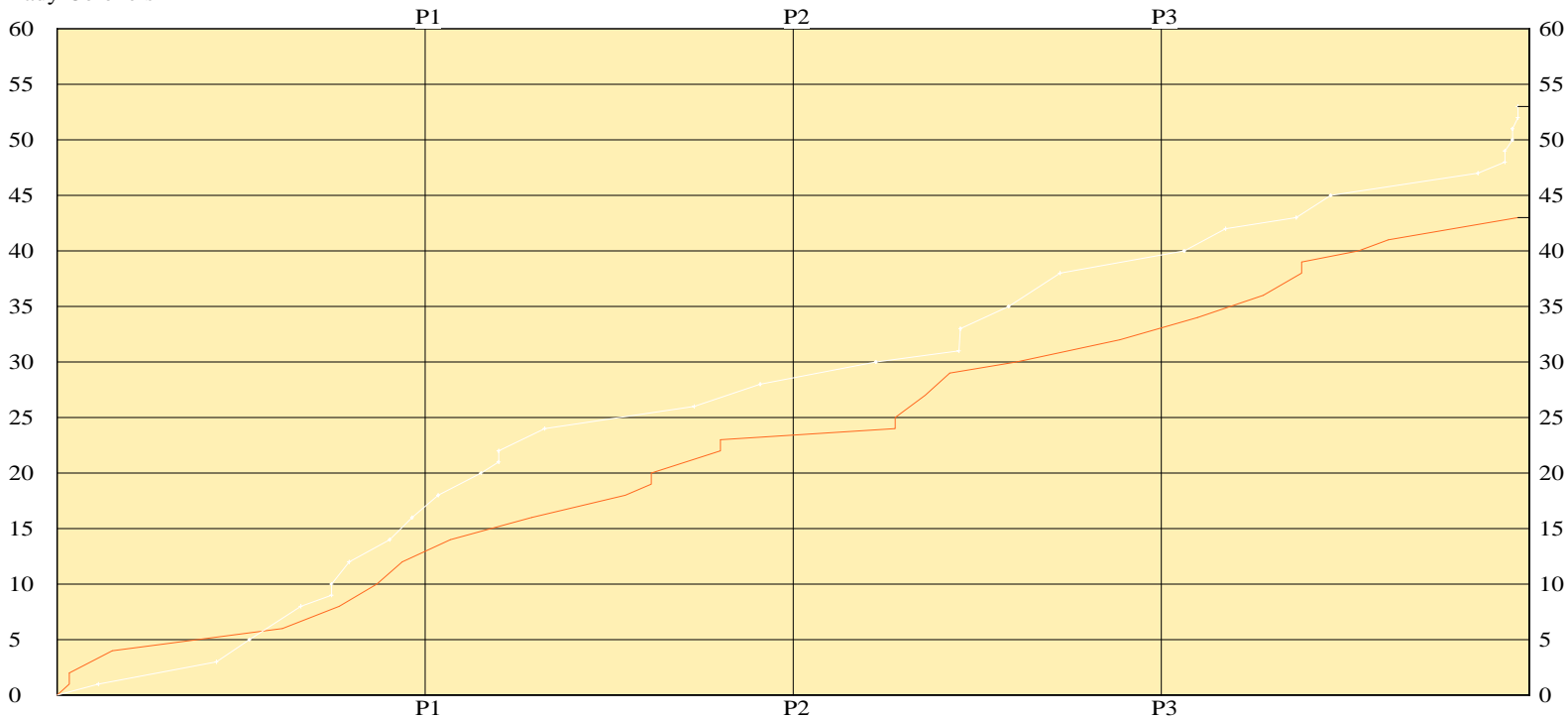
LEAD TIMELINE



Lady Colonels

Lady Marshals  
 Lady Colonels

SCORING TIMELINE



Largest Lead Mar 41 Hen 51 (10 pts) Lead Changes 3 Number of Ties 0

**KHSAA Basketball - Play by Play Report - Scoring Only (pg 1)**

**Marshall County Lady Marshals vs. Henderson County Lady Colonels**

**Date: 03/12/09 Time: 8:40 pm EST Site: Diddle Arena-Bowling Green, KY Attendance: 4659**

Name	Action	Action	Score	Clock	Diff	Name	Action	Action
J Gilland	FT Made		1-0	1	7:44 +1 (L1)	A Poindexter	Personal Foul	
J Gilland	FT Made		2-0	1	7:44 +2			
			2-1	1	7:06 +1	A Poindexter	FT Made	
H Ellis	Layup Made	M Thomas Assist	4-1	1	6:48 +3			
			4-3	1	4:32 +1	A Poindexter	Layup Made	D Dixon Assist
			4-5	1	3:49 -1 (L2)	A Poindexter	FG Made	D Dixon Assist
J Holder	Layup Made		6-5	1	3:06 +1 (L3)			
			6-8	1	2:42 -2 (L4)	O Fruit	3Pt Made	K Norman Assist
			6-9	1	2:02 -3	O Fruit	FT Made	
			6-10	1	2:02 -4	O Fruit	FT Made	
J Gilland	FG Made		8-10	1	1:52 -2			
			8-12	1	1:39 -4	D Dixon	FG Made	K Norman Assist
H Ellis	Putback Made		10-12	1	1:03 -2			
			10-14	1	0:46 -4	D Dixon	FG Made	O Fruit Assist
K Goins	Layup Made	J Gilland Assist	12-14	1	0:30 -2			
			12-16	1	0:17 -4	D Dixon	Layup Made	K Norman Assist

**End of Period Summary Lady Marshals 12 Lady Colonels 16**

**Largest Lead: Lady Marshals 6 Lady Colonels 10 (4 pts)**

**Lead in Period: Lady Marshals 6 Lady Colonels 10 (4 pts)**

**Lead Changes: 4 Ties: 0**

**Lead Changes: 3 Ties: 0 (this period)**

**5 for 4 oppo pts**

**3 for 4 pts**

**5/11 for 45.5 %**

**2/2 for 100 %**

**Turnovers**

**2nd Chances**

**Field Goals**

**Free Throws**

**0 for 0 oppo pts**

**4 for 2 pts**

**6/15 for 40.0 %**

**3/4 for 75.0 %**

			12-18	2	7:43 -6	D Dixon	Layup Made	K Norman Assist
M Thomas	Layup Made		14-18	2	7:27 -4			
			14-20	2	6:47 -6	D Dixon	Putback Made	
M Thomas	Personal Foul		14-21	2	6:24 -7	A Poindexter	FT Made	
			14-22	2	6:24 -8	A Poindexter	FT Made	
J Holder	FG Made		16-22	2	5:41 -6			
			16-24	2	5:24 -8	O Fruit	FG Made	A Poindexter Assist
L Bohannon	FG Made	J Gilland Assist	18-24	2	3:39 -6			
J Holder	FT Made		19-24	2	3:05 -5			
J Holder	FT Made		20-24	2	3:05 -4			
			20-26	2	2:09 -6	S Garrett	FG Made	K Norman Assist
J Holder	Layup Made		22-26	2	1:35 -4			
J Holder	FT Made		23-26	2	1:35 -3	D Dixon	Personal Foul	
			23-28	2	0:43 -5	L Rodgers	FG Made	S Garrett Assist

**End of Period Summary Lady Marshals 23 Lady Colonels 28**

**Largest Lead: Lady Marshals 14 Lady Colonels 22 (8 pts)**

**Lead in Period: Lady Marshals 14 Lady Colonels 22 (8 pts)**

**Lead Changes: 4 Ties: 0**

**Lead Changes: 0 Ties: 0 (this period)**

**5 for 4 oppo pts**

**5 for 0 pts**

**4/12 for 33.3 %**

**3/4 for 75.0 %**

**Turnovers**

**2nd Chances**

**Field Goals**

**Free Throws**

**3 for 4 oppo pts**

**4 for 2 pts**

**5/14 for 35.7 %**

**2/2 for 100 %**

			23-30	3	6:12 -7	A Barnes	FG Made	O Fruit Assist
J Holder	FT Made		24-30	3	5:47 -6	A Poindexter	Technical Foul	
J Holder	FT Made		25-30	3	5:47 -5			

**KHSAA Basketball - Play by Play Report - Scoring Only (pg 2)**

**Marshall County Lady Marshals vs. Henderson County Lady Colonels**

**Date: 03/12/09 Time: 8:40 pm EST Site: Diddle Arena-Bowling Green, KY Attendance: 4659**

Name	Action	Action	Score	Clock	Diff	Name	Action	Action
J Holder	FG Made		27-30	3 5:08	-3			
J Gilland	Layup Made		29-30	3 4:36	-1			
J Gilland	Personal Foul		29-31	3 4:24	-2	A Barnes	FT Made	
			29-33	3 4:22	-4	D Dixon	Putback Made	
			29-35	3 3:19	-6	A Barnes	FG Made	
M Thomas	FT Made		30-35	3 3:09	-5	K Norman	Personal Foul	
			30-38	3 2:12	-8	O Fruit	3Pt Made	D Dixon Assist
J Holder	Putback Made		32-38	3 0:54	-6			

**End of Period Summary Lady Marshals 32 Lady Colonels 38**

**Largest Lead: Lady Marshals 14 Lady Colonels 22 (8 pts)**

**Lead in Period: Lady Marshals 30 Lady Colonels 38 (8 pts)**

**3 for 4 oppo pts**

**6 for 2 pts**

**3/13 for 23.1 %**

**3/4 for 75.0 %**

**Turnovers**

**2nd Chances**

**Field Goals**

**Free Throws**

**Lead Changes: 4 Ties: 0**

**Lead Changes: 0 Ties: 0 (this period)**

**2 for 0 oppo pts**

**2 for 4 pts**

**4/9 for 44.4 %**

**1/2 for 50.0 %**

J Gilland	Layup Made		32-40	4 7:30	-8	A Poindexter	FG Made	A Barnes Assist
			34-40	4 7:13	-6			
			34-42	4 6:36	-8	A Poindexter	FG Made	D Dixon Assist
M Thomas	Layup Made		36-42	4 5:47	-6			
			36-43	4 5:04	-7	K Norman	FT Made	
M Thomas	Layup Made		38-43	4 4:57	-5			
M Thomas	FT Made		39-43	4 4:57	-4	K Norman	Personal Foul	
			39-45	4 4:19	-6	D Dixon	Putback Made	
M Thomas	FT Made		40-45	4 3:43	-5			
J Holder	FT Made		41-45	4 3:04	-4			
			41-47	4 1:07	-6	A Poindexter	Layup Made	K Norman Assist
H Ellis	Personal Foul		41-48	4 0:32	-7	O Fruit	FT Made	
			41-49	4 0:32	-8	O Fruit	FT Made	
			41-50	4 0:22	-9	A Barnes	FT Made	
			41-51	4 0:22	-10	A Barnes	FT Made	
H Ellis	Layup Made	M Thomas Assist	43-51	4 0:15	-8			
M Hunt	Personal Foul		43-52	4 0:15	-9	O Fruit	FT Made	
			43-53	4 0:15	-10	O Fruit	FT Made	

**End of Period Summary Lady Marshals 43 Lady Colonels 53**

**Largest Lead: Lady Marshals 41 Lady Colonels 51 (10 pts)**

**Lead in Period: Lady Marshals 41 Lady Colonels 51 (10 pts)**

**2 for 3 oppo pts**

**4 for 1 pts**

**4/15 for 26.7 %**

**3/5 for 60.0 %**

**Turnovers**

**2nd Chances**

**Field Goals**

**Free Throws**

**Lead Changes: 4 Ties: 0**

**Lead Changes: 0 Ties: 0 (this period)**

**1 for 0 oppo pts**

**3 for 4 pts**

**4/10 for 40.0 %**

**7/12 for 58.3 %**

**OFFICIAL BASKETBALL BOX SCORE**

03/12/09 8:40 pm EST

Diddle Arena

Henderson County Lady Colonels vs Marshall County Lady Marshals

Final Box Score

Bowling Green, KY

No.	Henderson County Lady Colonels	Total FG		3-point		Free throw		Rebounds			F	TP	A	TO	BLK	STL	MIN
		FG	FGA	FG	FGA	FT	FTA	Off	Def	Tot							
10	Ariel Barnes	2	5	0	2	3	5	0	2	2	4	7	1	2	0	4	31:35
12	Kayla Jennings	0	0	0	0	0	0	0	0	0	0	0	0	0	0	0	DNP
14	Ellie Fruit	0	0	0	0	0	0	0	0	0	0	0	0	0	0	0	DNP
15	Krista Norman	0	7	0	2	1	3	0	3	3	3	1	6	0	0	1	32:00
20	Lauren Rodgers	1	1	0	0	0	0	0	0	0	0	2	0	0	0	0	2:51
32	Danielle Dixon	7	13	0	0	0	2	6	2	8	3	14	4	0	2	1	32:00
22	Olivia Fruit	3	8	2	3	6	6	4	3	7	2	14	2	2	1	0	29:29
54	Alyse Poindexter	5	9	0	0	3	4	1	6	7	4	13	1	2	7	0	26:20
24	Sara Garrett	1	5	0	1	0	0	1	0	1	0	2	1	0	0	0	5:20
23	Alexia Langley	0	0	0	0	0	0	0	0	0	0	0	0	0	0	0	0:25
30	Kristen Oliver	0	0	0	0	0	0	0	0	0	0	0	0	0	0	0	DNP
33	Chelsea Stone	0	0	0	0	0	0	0	0	0	0	0	0	0	0	0	DNP
44	Breasha Bostic	0	0	0	0	0	0	0	0	0	0	0	0	0	0	0	DNP
21	Tyeesha Petrie	0	0	0	0	0	0	0	0	0	0	0	0	0	0	0	DNP
<b>Team (Included in Totals)</b>								<b>1</b>	<b>3</b>	<b>4</b>							
<b>Totals</b>		<b>19</b>	<b>48</b>	<b>2</b>	<b>8</b>	<b>13</b>	<b>20</b>	<b>13</b>	<b>19</b>	<b>32</b>	<b>16</b>	<b>53</b>	<b>15</b>	<b>6</b>	<b>10</b>	<b>6</b>	<b>160</b>

Total FG%: 1st half 11 - 29 (37.9%) 2nd half 8 - 19 (42.1%) Game 19 - 48 (39.6%) Deadball rebounds 2  
 3Pt FG%: 1st half 1 - 5 (20.0%) 2nd half 1 - 3 (33.3%) Game 2 - 8 (25.0%)  
 FT%: 1st half 5 - 6 (83.3%) 2nd half 8 - 14 (57.1%) Game 13 - 20 (65.0%)

No.	Marshall County Lady Marshals	Total FG		3-point		Free throw		Rebounds			F	TP	A	TO	BLK	STL	MIN
		FG	FGA	FG	FGA	FT	FTA	Off	Def	Tot							
10	Tory Fehrenbacher	0	0	0	0	0	0	0	0	0	0	0	0	0	0	0	1:12
12	Jordan Gilland	3	12	0	2	2	2	3	3	6	5	8	2	2	1	0	31:13
21	Michaela Hunt	0	1	0	1	0	0	0	0	0	1	0	0	0	0	0	0:22
23	Taylor Clark	0	0	0	0	0	0	0	0	0	0	0	0	0	0	0	0:15
24	Margaret Thomas	3	8	0	1	3	5	0	3	3	4	9	2	5	0	1	31:45
35	Jessica Holder	5	18	0	2	6	7	7	5	12	2	16	0	1	3	0	31:45
31	Hannah Ellis	3	4	0	0	0	1	3	6	9	4	6	0	3	0	0	30:45
40	Lena Bohannon	1	5	0	0	0	0	2	1	3	1	2	0	2	0	0	14:41
42	Kaylin Goins	1	3	0	0	0	0	1	0	1	0	2	0	1	1	0	14:28
34	Kelsey Lawson	0	0	0	0	0	0	0	0	0	0	0	0	1	0	0	3:34
30	Melanie McKendree	0	0	0	0	0	0	0	0	0	0	0	0	0	0	0	DNP
<b>Team (Included in Totals)</b>								<b>2</b>	<b>1</b>	<b>3</b>							
<b>Totals</b>		<b>16</b>	<b>51</b>	<b>0</b>	<b>6</b>	<b>11</b>	<b>15</b>	<b>18</b>	<b>19</b>	<b>37</b>	<b>17</b>	<b>43</b>	<b>4</b>	<b>15</b>	<b>5</b>	<b>1</b>	<b>160</b>

Total FG%: 1st half 9 - 23 (39.1%) 2nd half 7 - 28 (25.0%) Game 16 - 51 (31.4%) Deadball rebounds 4  
 3Pt FG%: 1st half 0 - 1 (0.00%) 2nd half 0 - 5 (0.00%) Game 0 - 6 (0.00%)  
 FT%: 1st half 5 - 6 (83.3%) 2nd half 6 - 9 (66.7%) Game 11 - 15 (73.3%)

Technical Fouls: V#54

Attendance: 4659

Officials: John Boylan, Jr., Mike Melton, Jamie Gatewood

Score by Period	1st	2nd	3rd	4th	Final	Record	Overall	Conf
Henderson County Lady Colonels	16	12	10	15	53	Lady Colonels		
Marshall County Lady Marshals	12	11	9	11	43	Lady Marshals		

	Lady Marshals	Lady Colonels		Lady Marshals	Lady Colonels		Lady Marshals	Lady Colonels
Points off Turnovers	4	15	Second Effort Points	7	12	Bench Points	2	4
Points in the Paint	28	20	3 Point Points	0	6	Free Throw Points	11	13
3pt Efficiency	-23.7	-3.3	Points/Shot	0.74	0.91	Defensive Stops	25	34
Largest Lead	41	51	Lead Changes	3		Number of Ties	0	

Game comments: None